



The Smart Cycle Lube

---

**User Manual**

[www.thecha.cc](http://www.thecha.cc)

## What is CHA?

---

CHA is a patented solid graphite chain lubricant applied with a refillable applicator tool. Whether you ride to work every day, run errands around town, or head out for long weekend rides, CHA keeps your chain running smoothly. Instead of dripping liquid oil onto your chain, you apply a specially engineered, proprietary graphite formula directly to the rollers. Graphite works progressively into the pins and rollers as you ride, lubricating the chain from the inside out.

Because it is dry, CHA does not attract dust and grit the way liquid oils and wet waxes do. That is the core difference, and it matters for how your drivetrain wears over time.

### The three formulas

Each formula has its own applicator tool. The colour is on the applicator body, so you always know which one you are holding.



#### ■ Core

Standard, all-round conditions. Uncoloured applicator body. Your everyday lube.



#### ■ Storm

Heavy-rain over-layer. Cobalt blue applicator body. Apply over Core for wet rides.



#### ■ Trail

Mud and grit under-layer. Mud Orange applicator body. Apply under Core for off-road.

### What is in the box

Applicator tool (with formula capsule fitted) and this manual. Refill capsules are available separately at [thecha.cc](http://thecha.cc).

## Before You Start

---

### **No degreasing needed**

You do not need to degrease your chain before applying CHA. In fact, deep cleaning can interfere with how the graphite first adheres. A dry chain in normal riding condition is ready to go. If your chain is caked in old wet lube, wipe off the loose surface gunk with a dry cloth, but you do not need to strip it back to bare metal.

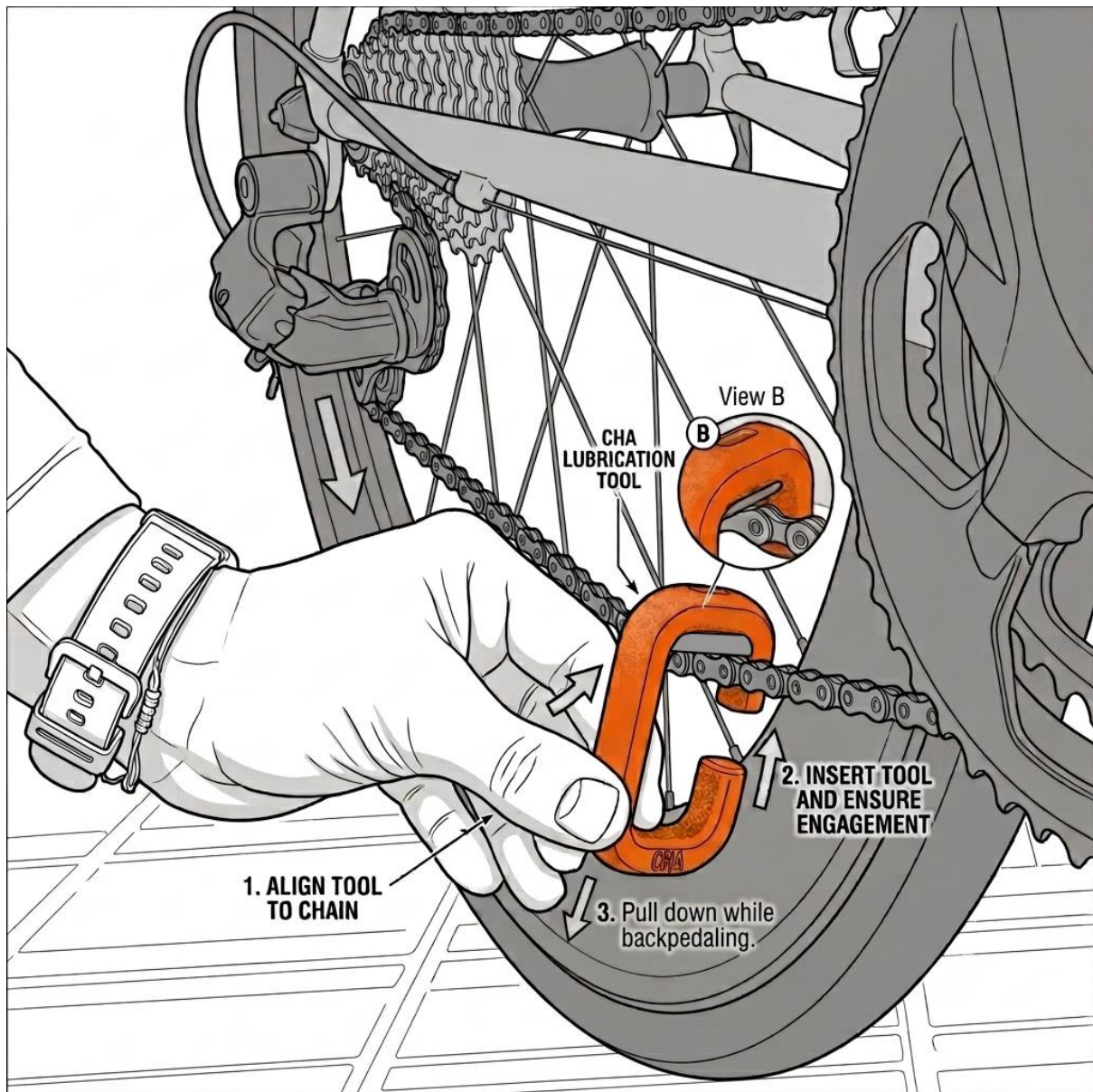
### **Build the layer**

CHA performs best once a graphite layer has built up on the chain. For the first ride, apply before you set off and again after you return. This lays down the foundation the formula keeps building on with each subsequent application.

### **Break-in**

Expect a short break-in of roughly 1 to 5 km as the graphite works into the pins and rollers. After that, the chain settles into its proper feel.

## Applying CHA



Hold the applicator against the chain rollers and backpedal so the chain runs across the graphite tip. The formula transfers onto the rollers as the chain moves.

1. Shift to a middle gear so the chain runs cleanly across the cassette.
2. Hold the applicator tip firmly against the lower run of the chain, against the rollers.
3. Backpedal smoothly for roughly 7 to 10 full turns, keeping steady contact so graphite transfers evenly.
4. Run the chain back a few times to work the graphite in, then wipe lightly to check coverage.

### **Checking coverage (the cloth test)**

Run a clean cloth or your finger along the chain. You are looking for an even, dry, slightly slick film across the rollers, not a build-up on the outer plates. This tactile check is the correct way to confirm the chain is lubricated. Re-apply where coverage is thin.

### **Using Storm and Trail**

Storm and Trail are layered with Core, not used instead of it:

- **Wet weather:** apply Core first, then add Storm as an over-layer to shed heavy rain.
- **Mud and grit:** apply Trail first as an under-layer, then Core on top.

**Link to first application guide: [OPEN](#)**

## When to Re-apply

---

How often you re-apply depends on how much and where you ride, not on a fixed schedule. A few simple guides:

- **Daily commuting or city riding:** a quick top-up around once a week keeps the chain in good shape. If you ride in rain or on dusty roads, do it a little more often.
- **Occasional or weekend riding:** re-apply when the chain starts to feel dry to the touch, often every few rides.
- **Longer or sportier rides:** as a rough distance guide, Core covers a good stretch of riding between applications under dry conditions; wet or muddy rides shorten that.

The simplest habit is the cloth test described earlier. If the chain feels dry rather than slick, it is time for a top-up. Applying a little more often than needed does no harm.

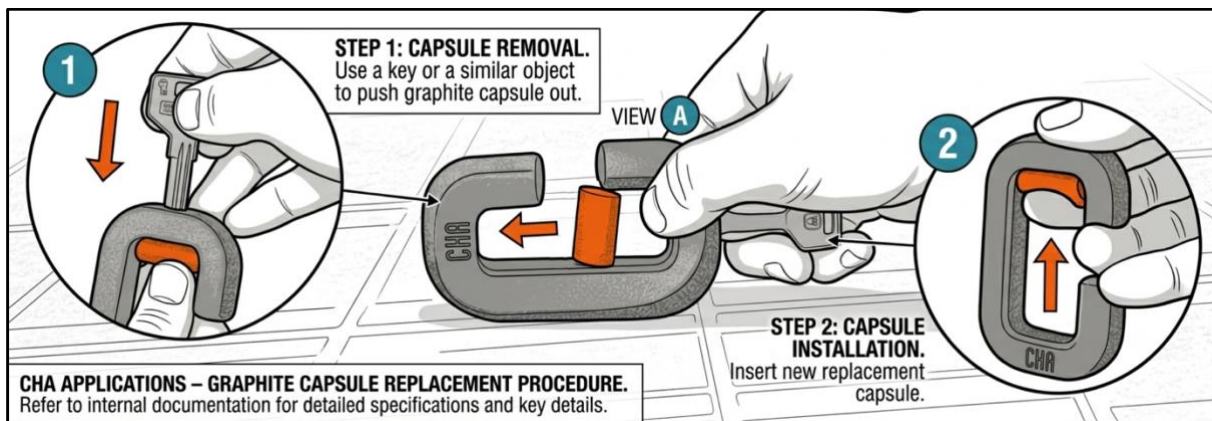
### In short

Commuters: a weekly top-up is a good rhythm. Weekend riders: re-apply when the chain feels dry. Everyone: when in doubt, the cloth test decides.

## Replacing the Capsule

The graphite formula lives in a replaceable capsule seated in the top of the applicator. When a capsule is spent, swap it for a fresh one. The applicator tool itself you keep.

1. Find the small hole at the **top** of the applicator.
2. Insert a key or a thin object through that hole and push to eject the used capsule out.
3. Take a fresh capsule and press it **upward** into the top cylindrical cavity until it seats firmly.
4. Wipe the tip and you are ready to apply again.



### How long a capsule lasts

A capsule lasts for many applications, but the exact number depends on how you ride, how much formula you apply each time, and the conditions. As a rough guide, a Core capsule typically gives around 90 to 120 applications, with Storm and Trail somewhat fewer. For most riders that is many months of use. Refill capsules are available at [thecha.cc](http://thecha.cc).

### Storage

Keep the applicator with its tip clean and dry between rides. Store at room temperature, away from direct heat. Replace the cap if your applicator has one.

## Why Graphite, Not Oil

---

The most common question is simple: why move away from liquid lube at all? The answer comes down to how dirt behaves inside a chain.

### The abrasive paste problem

Liquid oils and wet waxes are sticky by design, so they cling to the chain. Unfortunately they also attract dust and road grit, which works its way inside the pins and rollers. There, oil and dirt combine into an abrasive grinding paste that accelerates chain wear from the inside, exactly where you cannot see or clean it.

Graphite is dry. It lubricates the same articulating surfaces but does not hold onto grit, so no abrasive paste forms. The chain stays cleaner internally and wears more slowly.

### How it lubricates

Graphite is not just a surface coating. As the chain articulates under load, the formula is worked progressively into the pins and rollers during riding. That is why building the layer over the first few applications matters, and why the chain keeps improving rather than degrading between top-ups.

#### Independent science

The lubricating behaviour of graphite in mechanical contacts is documented in third-party research, including work from Fraunhofer IWM and studies published in Tribology Transactions (2025). CHA relies on its own documented testing alongside this wider science base.

## Frequently Asked Questions

---

### **Do I need to clean or degrease my chain first?**

No. A dry chain in normal condition is ready. Avoid deep degreasing, as it can interfere with early graphite adhesion. Wipe off loose surface gunk only.

### **How often should I apply?**

It depends on how much you ride. For daily commuting, a quick top-up about once a week works well. For occasional riding, re-apply when the chain feels dry to the touch. Wet or dusty conditions call for a little more often. The cloth test is your real guide.

### **Can I use CHA over my existing oil?**

For best results let the chain run in dry condition. Heavy wet lube on the chain will blunt the benefit, so wipe off loose surface oil first. CHA builds its own layer from there.

### **Which formula do I need?**

Core for everyday riding and commuting. Add Storm over Core for heavy rain. Apply Trail under Core for mud and grit. Core is the foundation in all cases.

### **How long does a capsule last?**

Many applications, typically months of use for most riders. The exact number depends on how often and where you ride and how much you apply each time. Replace the capsule when it runs out and keep the tool.

## Product Details

---

<b>Product</b>	CHA solid graphite chain lubricant, applicator system
<b>Formulas</b>	Core (standard), Storm (wet over-layer), Trail (mud under-layer)
<b>Applicator body</b>	Nylon PA12 Tough
<b>Capsule</b>	Solid graphite formula, replaceable
<b>Patent</b>	WO 2026/057906 A1
<b>Break-in</b>	1 to 5 km
<b>Coverage</b>	Many rides per application; varies with use and conditions

### Support

Questions, refills, and the full range are at [thecha.cc](https://thecha.cc). For anything else, reach us at [hello@thecha.cc](mailto:hello@thecha.cc).

CHA is a product of CGPills SL, Lluçmajor, Illes Balears, Spain. Patent WO 2026/057906 A1. More details at [thecha.cc](https://thecha.cc).